



ᠮᠣᠩᠭᠣᠯᠢ
ᠰᠤᠮᠤᠯᠠᠭ
ᠰᠤᠮᠤᠯᠠᠭ
ᠰᠤᠮᠤᠯᠠᠭ

Data dissemination and register-based census – Mongolian experience

Asian thematic conference

12-14 February, 2020

Manila, Philippines

Bayarmaa Baatarsuren

Senior statistician

NSO of Mongolia





Data dissemination

Generic Statistical Business Process Model





INCREASING THE USE OF STATISTICS



ပြည်ထောင်စုစာရင်းကိရိယာများ

Simple and understandable

Developing and adopt general design and standards for statistical products visualized by images and infographics that are easy to be understood by users

Accessible

Enable the easy and fast access for users to get statistics in Open data standards, establish and develop General open data system

Timely

Prepare easily understandable the statistics, its methodology and metadata for users, disseminate these through online data tools, official website of NSO and social medias

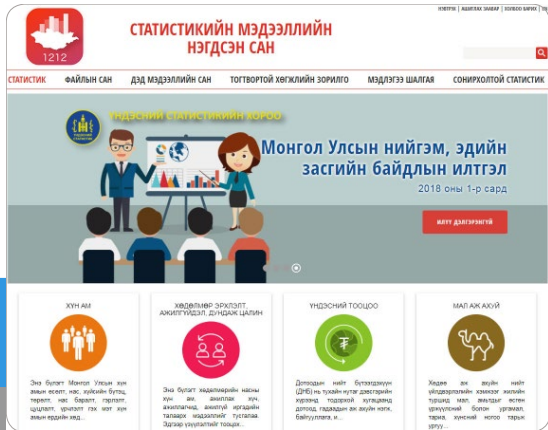
DISSEMINATION SCHEDULE FOR OFFICIAL STATISTICAL DATA, CENSUS AND SURVEY RESULTS

February - 2020

Item Name	File Name	Dissemination Date	Comment
POPULATION & HOUSING BY REGIONAL	POP	01 February 2020	
POPULATION BY ETHNIC	POP	01 February 2020	
POPULATION BY SEX	POP	01 February 2020	
POPULATION BY AGE	POP	01 February 2020	
POPULATION BY EDUCATION	POP	01 February 2020	
POPULATION BY OCCUPATION	POP	01 February 2020	
POPULATION BY RELIGION	POP	01 February 2020	
POPULATION BY MARRIAGE	POP	01 February 2020	
POPULATION BY HOUSEHOLD TYPE	POP	01 February 2020	
POPULATION BY HOUSEHOLD SIZE	POP	01 February 2020	
POPULATION BY HOUSEHOLD TYPE AND SIZE	POP	01 February 2020	
POPULATION BY HOUSEHOLD TYPE AND SIZE BY REGIONAL	POP	01 February 2020	
POPULATION BY HOUSEHOLD TYPE AND SIZE BY ETHNIC	POP	01 February 2020	
POPULATION BY HOUSEHOLD TYPE AND SIZE BY SEX	POP	01 February 2020	
POPULATION BY HOUSEHOLD TYPE AND SIZE BY AGE	POP	01 February 2020	
POPULATION BY HOUSEHOLD TYPE AND SIZE BY EDUCATION	POP	01 February 2020	
POPULATION BY HOUSEHOLD TYPE AND SIZE BY OCCUPATION	POP	01 February 2020	
POPULATION BY HOUSEHOLD TYPE AND SIZE BY RELIGION	POP	01 February 2020	
POPULATION BY HOUSEHOLD TYPE AND SIZE BY MARRIAGE	POP	01 February 2020	



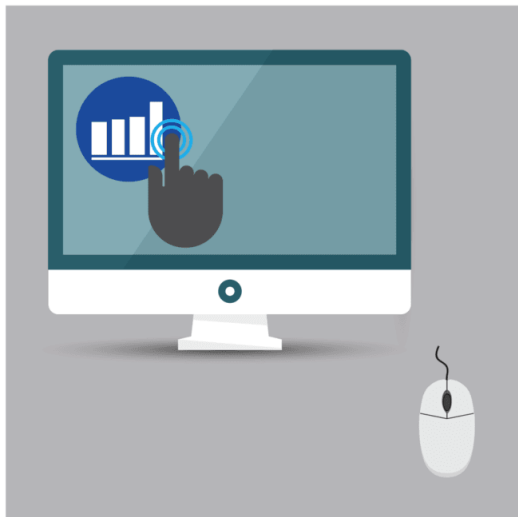
Types of Dissemination



Online database



SIMPLE AND UNDERSTANDABLE



V. Please download more information about particular industries in excel format by clicking on their logos while using our website. /internet connection required/

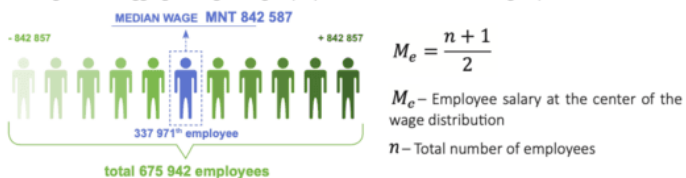
Statistical bulletin

Wages and salaries: Wage and salary consists of basic pay, bonuses, compensation for hours of not working and other payment.

If the nominal wage of citizen "E" is 1161178 togrogs then actual salary he/she receives after tax deductions:



Median wage is the amount that divides the wage distribution into two equal groups, half having wage above that amount, and half having wage below that amount. Mean wage is the amount obtained by dividing the total aggregate wage of a group by the number of units in that group.



Nominal wage is wages measured in terms of money paid of employees after deduction for taxes and contributions, not adjusted by consumer price index and not in terms of purchasing power.

A **nominal wage index (NWI)** is proportion of nominal wage of current period and nominal wage of base period as expressed percentage.

The **real wages** refer to wages that have been adjusted for inflation and measured changes of purchasing power.

A **real wage index** is the percentage of nominal wage index to consumer price index of corresponding period.



SOCIAL INSURANCE AND WELFARE

According to the General Authority for Health Insurance and General Authority for Social Insurance, social insurance fund's revenue reached MNT 1802.9 billion in the first 8 months of 2019, reflecting an increase of MNT 293.0 billion or 19.4% compared to the same period of previous year. The fund's expenditure was MNT 1683.5 billion, showing an increase of MNT 291.5 billion or 20.9% compared to the same period of previous year.

The MNT 293.0 billion increase in the social insurance fund's revenue was mainly affected by increases in pension insurance fund revenue by MNT 235.7 billion (21.6%) and health insurance fund revenue by MNT 26.2 (13.7%) billion from the same period of previous year.

The MNT 291.5 billion increase in the social insurance fund's expenditure was mainly affected by increases in pension insurance fund expenditure by MNT 156.2 (14.7%) and industrial accident and occupational disease insurance fund's expenditure by MNT 66.6 (3.1 times) billion from the same period of previous year.



VI. Please download more information about particular industries in excel format by using QR code reading application while using your mobile. /internet connection required

SIMPLE AND UNDERSTANDABLE INFOGRAPHICS

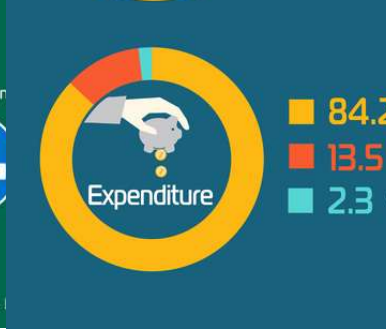
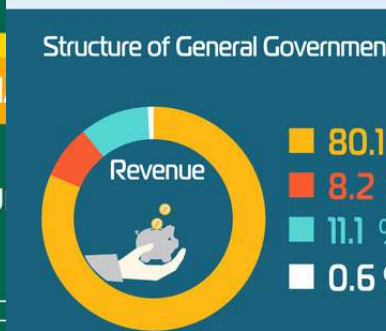


9 مەھسۇم
 9 مەھسۇم

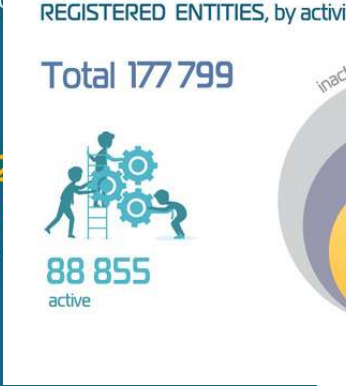
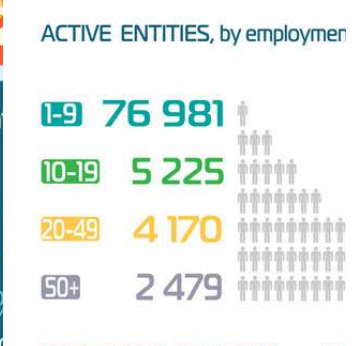
REVENUE INSURANCE in the first



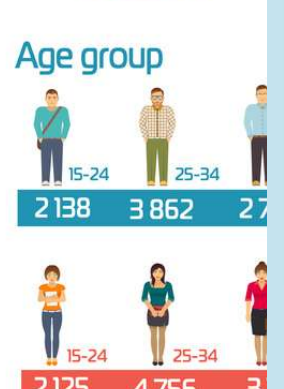
GENERAL GOVERNMENT in the first half of 20



STATISTICAL REGISTER in the first half of 2



REGISTERED UNEMPLOYED at the end of



HEALTH SERVICES in the first 6 months



TRANSPORT, in the first half of 2019

Air transport

	2018 I-VI	2019* I-VI
Passengers, thousands people (double counting)	413.4	477.5
Carried freight, tonnes	1 511.3	1 489.7
Revenue, billion togrogs	181.5	194.9

Railway transport

	2018 I-VI	2019* I-VI
Passengers, million people (double counting)	1.3	1.2
Carried freight, million tonnes	12.2	13.2
Revenue, billion togrogs	288.1	335.6

Auto transport

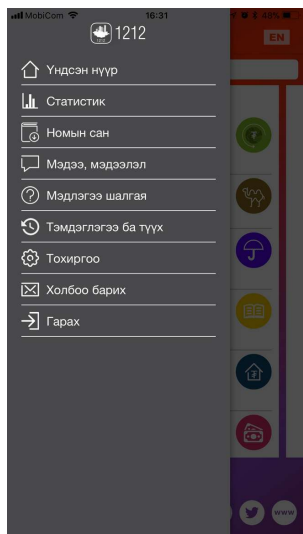
	2018 I-VI	2019* I-VI
Passengers, million people (double counting)	99.8	89.2
Carried freight, million tonnes	21.1	20.0
Revenue, billion togrogs	307.5	315.9

*Preliminary estimates

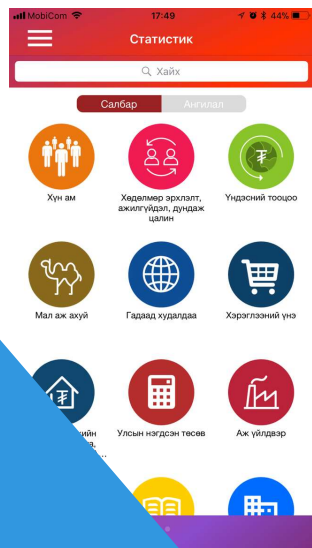
1212.mn mobile application



1212.mn
 1212.mn
 1212.mn



Main menu



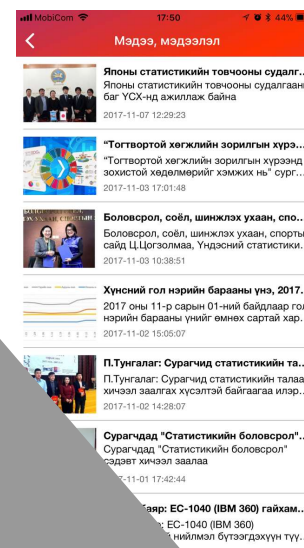
Statistics

Quantitative dynamic series



Library

Electronic versions of Survey reports



News

Daily news of Statistics



Knowledge quiz

Gaming application for users

DATA LAB

Enabled the possibility of using microdata of surveys and censuses for certain users

Child development survey
/2000, 2005, 2010, 2012, 2016/

Time use survey
/2011, 2015/

Social indicators sample survey
(HYTC-2013) /2013/

Study on overcoming climate conditions
and difficulties in Mongolia
/2012, 2013, 2014/

Labor force survey (LFS)
/2002-2003, 2006-2007, 2007-2008, 2008-2009,
2010, 2011, 2012, 2013, 2014, 2015, 2016/

Household social and economic survey (HSES)
/2002-2003, 2007-2008, 2009, 2010-2011, 2012,
2013, 2014, 2015-2016/

Population and housing census
/2000, 2010/

Reproductive Health Survey
/1998, 2003, 2008/



السلطة الفلسطينية
إدارة الإحصاءات الوطنية



TRAINING FOR USERS

High school seniors

Around 6000 students from over 60 high schools

Media

Journalist /around 400 journalists in 8 training since 2013/

Government organizations

Policy makers, assistances of the Parliament members, statistical units of ministries and agencies, /regularly, annually/

Universities and colleges

Students with economics and statistics major, librarians

Business organizations

Personals from primary data provider enterprisers / regularly, annually/

Government organization

Enumerator who collects data from primary units, governors of bag and khorros, their deputies



مركز
المسجد
و
المكتبة



Accessible and timely



ᠮᠣᠩᠭᠣᠯᠤ ᠤᠨᠳᠦᠰᠦᠨ ᠰᠤᠲᠢᠰᠲᠢᠬᠤ



Open data inventory 2018



2018

11 Ranking
(of 178)

77

63 Coverage

90 Openness

	Rank	ODIN score	Coverage	Openness
2017	24 (of 180)	62	53	71
2016	23 (of 173)	61	58	63
2015	3 (of 125)	65	64	65



<http://opendatawatch.com>

Country	Region	Overall A.	Coverage	Openness
1 Singapore	South-Eastern Asia	88	87	100
2 Denmark	Northern Europe	86	74	98
3 Netherlands	Western Europe	84	71	96
4 Poland	Eastern Europe	81	75	81
5 Slovenia	Southern Europe	80	67	91
6 Finland	Northern Europe	80	74	81
7 Germany	Western Europe	78	67	89
8 Canada	North America	75	75	80
9 Sweden	Northern Europe	74	71	81
10 Norway	Northern Europe	73	73	77
11 Mongolia	Central Asia	77	63	89

Data Elements	Data Categories			
	Social Statistics	Economic Statistics	Environment Statistics	All
Indicator coverage and disaggregation	72	79	90	80
Data available last 5 years	72	79	90	80
Data available last 10 years	72	79	80	77
First administrative level	28	13	40	29
Second administrative level	22	0	25	21
Coverage subscore	53	65	70	63
Machine readable	89	93	100	94
Non-proprietary	89	100	100	96
Download options	89	93	100	94
Metadata available	56	93	60	70
Terms of use	89	100	100	96
Openness subscore	82	96	92	90



ᠨᠢᠰᠣ ᠨᠠᠭᠤᠯᠠᠭᠤᠨ
 ᠨᠠᠭᠤᠯᠠᠭᠤᠨ ᠨᠢᠰᠣ



METHODOLOGIES OF POPULATION CENSUSES

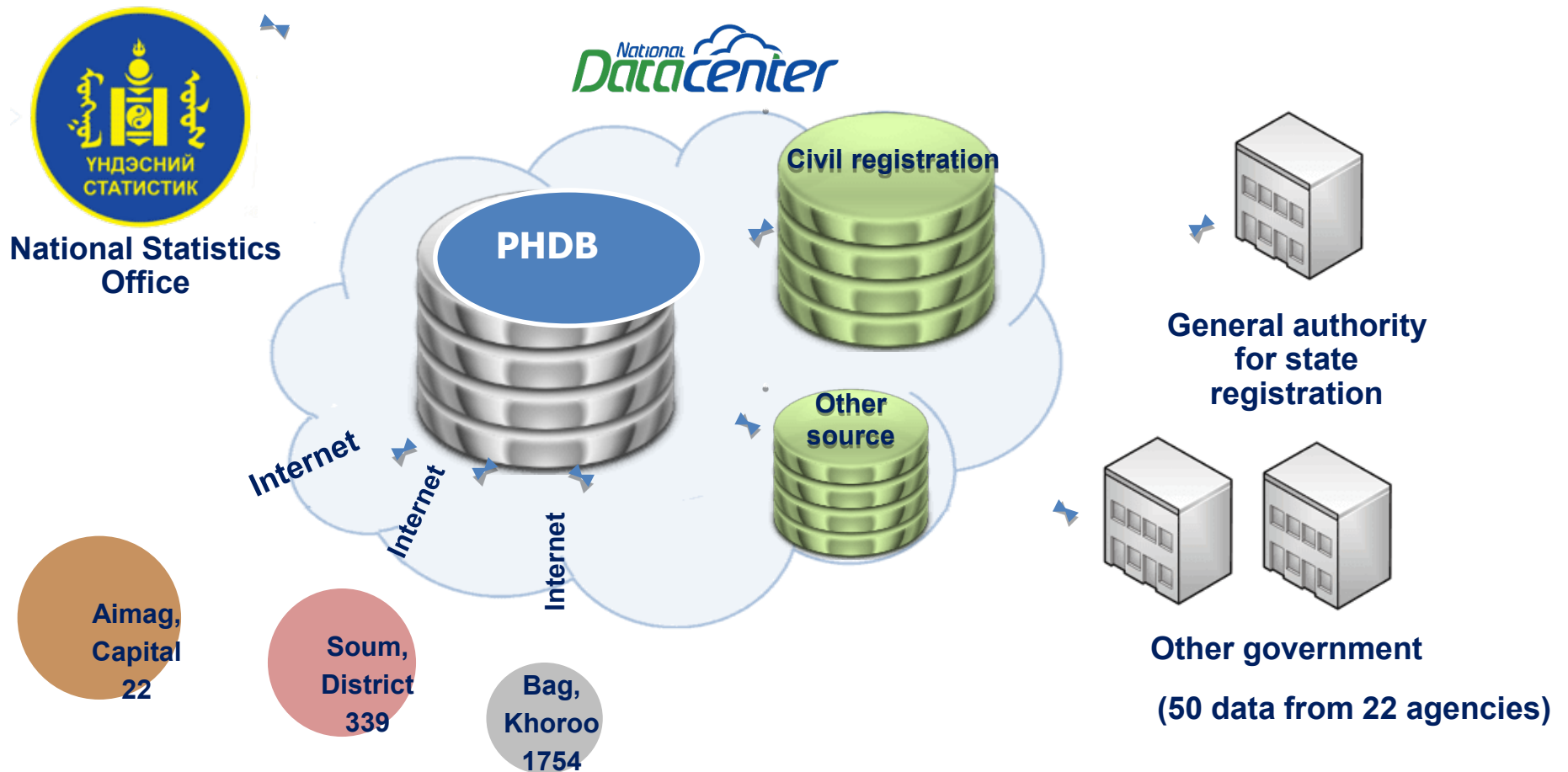
YEAR	METHOD	QUESTIONNAIRE	DATE
1989	Traditional	Individual	1989.01.07-08 /Sunday/ 00:00 hour
2000	Traditional	Household/6 person/	2000.01.08-09 /Sunday/ 00:00 hour
2010	Traditional	Household/6 person/	2010.11.10-11 /Thursday/ 00:00 hour
2015	Register based	PHD, civil registration, social insurance, social welfare, border ...	2015.12.31-2016.01.01 /Friday/ 00:00 hour
2020	Combined	Long, short form	2020.01.08-09 /Thursday/ 00:00 hour



МОНГОЛ УЛСЫН
СТАТИСТИК БУСАГ

POPULATION AND HOUSEHOLD DATABASE - PHDB

- Every administrative unit connected to online centralized database.
- For that result every migration can be monitor.



DATA EXCHANGE ARCHITECTURE



**National Statistics
Office**



 **Cyber Security Agency**


Government Organization

 **Cyber Security Agency**


Government Organization

 **Cyber Security Agency**

**National
Datacenter**

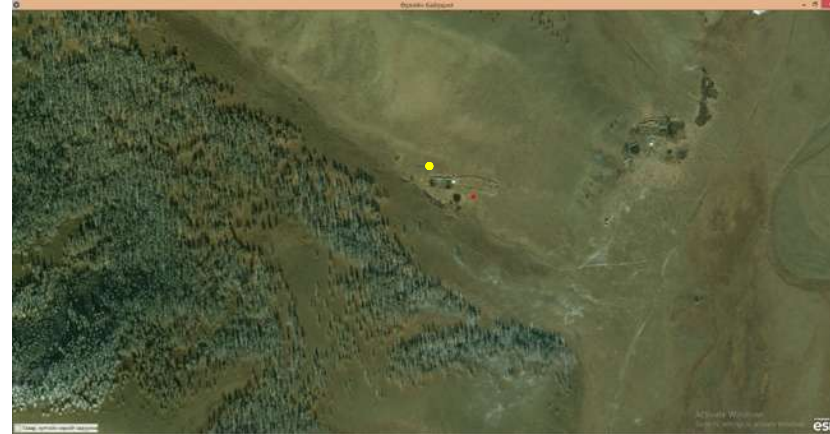


МОНГОЛЫН СТАТИСТИК УРГААГААС



POPULATION AND HOUSEHOLD DATABASE - PHDB

- This system contains household location points.
- Urban and rural household location digitized using satellite imagery.



- Survey sample frame
 - ✓ Social Indicators Sample Survey
 - ✓ Household Socio-Economic Survey
 - ✓ Labor Force Survey
 - ✓ Time Use Survey
 - ✓ Multiple indicator cluster survey
 - ✓ Woman's Health and Life Experience Survey
- Conduct address based Housing census.
- Conduct register based Population census.



МОНГОЛЫН СТАТИСТИКА



Հանրային Գիտությունների Գրասխան

CENSUS PREPARATION





ᠮᠣᠩᠭᠣᠯᠤ ᠵᠢᠰᠢᠰᠢᠲᠢᠬᠤ ᠨᠠᠭᠤᠯᠠᠭ

Thank you
for your attention